



## PD30 series - Photoelectric Sensors

# Sensors

# PD30 Series

## Miniature photoelectric sensors

This new range of miniature high-performance sensors comes in three complete product lines: a PD30 STAINLESS STEEL family with IP69K and Ecolab certifications and superior durability, a cost-effective PD30 BASIC and *POINTSPOT* family with potentiometer adjustment and a refined PD30 ADVANCED family with teach-in function, dust warning, and options for muting and remote teaching. The PD30 sensor family combines excellent sensing abilities with an optimised compact housing design. Featuring a size of only 10.8 x 20 x 30 mm, it follows international industry standards. In addition, the PD30 family covers a wide variety of sensing principles to fit requirements of virtually any application: diffuse-reflective, background suppression, retro-reflective with or without polarization, even for transparent objects, as well as through-beam. These PD30 sensors are eminently suited for applications where space saving and high accuracy in detection are of vital importance.



## Full range of PD30 sensors

### World-class housing design

The compact and robust sensor housing in ABS-PMMA offers a high level of water and dust protection (IP 67). The Stainless steel version is IP69K and Ecolab certified.

### High EMC performance

The microprocessor technology and the compact design ensure excellent EMC performance.

### Environmentally friendly

This lead-free sensor is designed according to the RoHS directive. The highly advanced microprocessor design optimizes power consumption, allowing a 20% energy reduction compared to other sensors.

### Simplified setup

Distance and sensing functions are easily set via the teach button or the remote teach wire on the PD30 ADVANCED sensors and via the freely adjustable potentiometer on the PD30 BASIC sensors, the PD30 *PointSpot* sensors and the PD30 Stainless steel sensors.

### Space optimization

Despite its small size, PD30 offers the longest sensing range, managing distances formerly reached only by larger sensors.

### Tamper-proof (PD30 Advanced series)

Connecting the remote teach wire to the power supply disables the push button and makes the sensor tamper-proof.

### Diagnostic warning (PD30 Advanced series)

Two options are available: a 'dust output' that monitors the sensing performance and sends a signal if the sensor gets dirty, and a 'mute input' that allows a PLC to check the application for proper sensing operations.

### Approvals

CE (EN60947-5-2)  
cULus (UL508)



\*) Only stainless steel

## PD30 Series

### PD30 Stainless Steel



The PD30 Stainless Steel sensor family is designed for use in harsh or hygienic environments. Built of excellent materials, the housing is resistant to high-pressure washdown, aggressive cleaning agents, and disinfectants. The sturdy stainless steel housing (AISI316L) together with high-quality plastic

materials like PEEK, PPSU, and PES sealings of FKM guarantee an outstanding mechanical resistance.

IP69K and Ecolab certified, these stainless steel sensors superiorly meet the demands of the food and beverage industry.

### PD30 Advanced



Sensitivity adjustment is accessible and highly flexible due to the teach-in and remote teach functions offered by the PD30 Advanced sensor series. Using the remote teach function, the operator can set the sensor from a PLC. Furthermore, the Advanced series fea-

tures dust warning and mute input, ensuring that sensor malfunctions are timely detected, and costly machine downtime is avoided.

The Advanced series offers detection of transparent objects such as PET bottles.

### PD30 Basic



The PD30 Basic sensor family presents a range of general-purpose sensors: economical, yet highly efficient! These sensors feature top or back potentiometer for sensitivity adjustment as well as background suppression

(BGS) based on a brand-new sensing principle which considerably increases the sensing distance (200 mm) and improves the detection accuracy of different colours.

### PD30 PointSpot



The PD30 Basic sensor family includes a *PointSpot* version with a visible, small and precise red beam of light. The *PointSpot* emitter sends out a more concentrated light resulting in a clear-cut

light spot without any surrounding halo light to disturb the detection. The *PointSpot* sensors enable detection with precise accuracy.

# PD30 Series

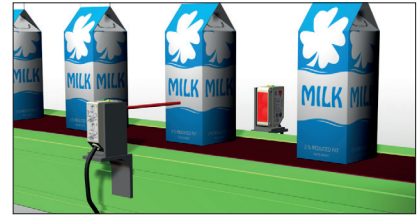
## Miniature photoelectric sensors

### Product types



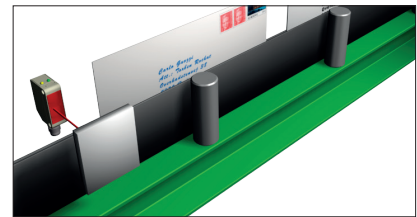
#### Through-Beam

Separate emitter and receiver in a separate housing. A sensing distance of 15 m enables the sensor to be used in industrial settings where reliable detection is of primary importance. With a powerful infrared light beam, the sensor can see through various materials and determine whether content is present or not.



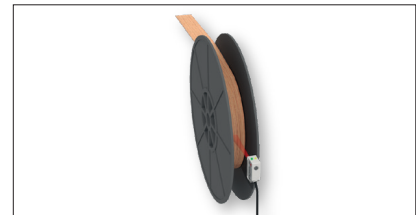
#### Retro-Reflective and Polarized Reflective

Emitter and receiver in one and the same housing. The signal from the emitter is sent to a reflector/passive device, and the need for wiring is reduced to one side of the application. The infrared retro-reflective sensor is primarily used in applications where the light beam must be invisible - for instance in entrance systems/doorways. The polarized reflective sensors are also able to detect objects with bright shiny surfaces.



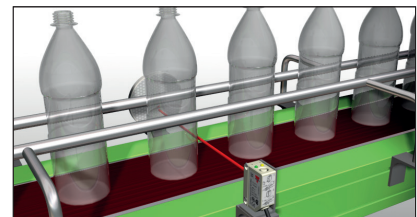
#### Retro-Reflective PointSpot

Emitter and receiver in one and the same housing. The signal from the emitter is sent to a reflector/passive device, and the need for wiring is reduced to one side of the application. The retro-reflective *PointSpot* sensor emits a highly visible and well-defined light spot without any disturbing "halo". The polarized reflective sensors are also able to detect objects with bright shiny surfaces.



#### Retro-Reflective for transparent objects

Like retro-reflective sensors - but optimised to detect transparent objects such as PET bottles. The PD30 sensor features a long-range version suitable for supervising the jamming zone on both narrow and wide conveyor belts.



#### Diffuse-Reflective

Emitter and receiver in one and the same housing. A diffuse-reflective sensor without background suppression measures only energy returned from objects, which makes it ideal for structured surfaces because the sensor detects an average amount of light reflected.

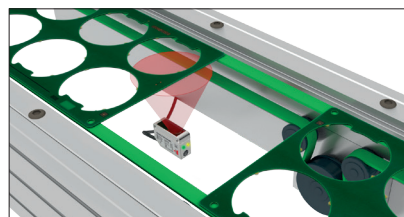


## Product types



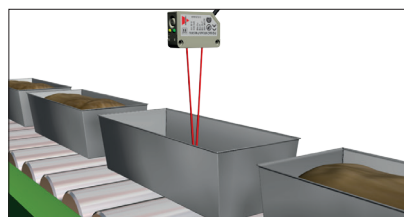
### Diffuse-Reflective - Extremely wide-angle

Emitter and receiver in one and the same housing. The diffuse-reflective sensor with an extremely wide detection angle can be used to detect PCBs despite large holes in the board, which means the PCB is registered as one PCB in the product cycle.



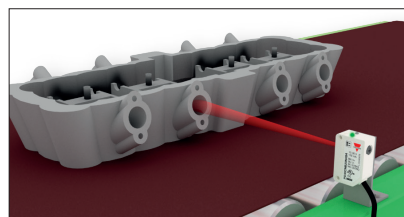
### Background Suppression

A background suppression sensor detects an object using triangulation. Unlike a diffuse-reflective sensor, it is not colour-sensitive and is, therefore, capable of detecting a black object in front of, for instance, a white background.



### Background Suppression *PointSpot*

A background suppression sensor detects an object using triangulation. The background suppression *PointSpot* sensor has an excellent colour variation suppression (same distance on all colours). In addition, the *PointSpot* sensor emits no disturbing halo light but produces a well-defined, visible light spot.



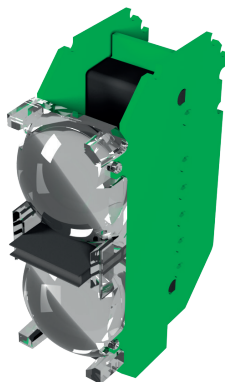
## General features and functions

### Electrical and optical design

#### PD30 standard

An optimised aspherical lens design allows for both a wide sensing angle and a long sensing range.

A PCB 'sandwich construction' together with microprocessor technology and a robust, functional analogue design provide optimised sensing and EMC performances, exceeding requirements from IEC. PD30 is a sensor optimised for industrial environments!



#### PD30 *PointSpot*

An optimised lens holder and lens design that generates the *PointSpot* light beam and eliminates the halo light for a precise and well-defined detection performance.

Micro-processor techniques featuring control of the emitter pulses, detection, signal filtration, synchronisation, LED indication control as well as the output and short-circuited detection. The sensitive parts of the sensor are shielded with a metal casing to achieve the best EMC performances. A sensor optimised for Industrial automation.



# PD30 Series

## Miniature photoelectric sensors

### PD30 Stainless Steel - features and functions



#### Waterproof sealings

Flourelastomer (FKM)

#### Indicator cover

Polyethersulfone (PES)

#### Yellow LED

Target detected

#### Sensitivity trimmer shaft

Polyetheretherketone (PEEK)

#### Housing and clips

AISI316L High-grade stainless steel

#### Green LED

Power supply and signal stability

#### Front glass

Polyphenylene sulfide (PPSU) or Polymethyl methacrylate (PMMA) organosiloxane-coated

#### Laser markings

for better hygiene

#### Large lens

ensures long sensing range

#### 4-pin M8 plug connector

to meet most connection requirements

#### Built-in mounting holes

2 x M3 for fast mounting  
Spacing: 25.4 mm (1")

#### Waterproof sealings

#### 4-wire PVC cable

Ø3.3 mm to meet most connection requirements

### PD30 Stainless Steel - benefits



#### Highest degree of protection

The IP69K rating is for applications where high pressure and high temperature wash-down is used to sanitize equipment.

The PD30 Stainless steel housing withstands high-pressure cleaning processes with chemicals, and the sensor's object detection is continuous and reliable even in the harshest conditions. Certified by Ecolab.

Tolerates	Description of application	Concentration	Load duration	Result
Topax 56	Acidic foam cleaner for the food industry	5%	240 hours at 50°C	Passed
P3 Hypochloran	Chlorine-containing disinfectant for the food industry	1%	240 hours at 24°C	Passed
TOPAZ CL1	Alkaline and chlorine-containing foam cleaner for the food industry	5%	240 hours at 50°C	Passed
TOPAZ AC1	Acidic foam cleaner for the food industry	4%	240 hours at 50°C	Passed
TOPAZ MD3	Alkaline foam cleaner for the food industry	5%	240 hours at 50°C	Passed
P3-topactive OKTO	Acidic foam disinfectant for the food industry	1%	240 hours at 24°C	Passed

## PD30 Stainless Steel - specifications

PD30ET..		Background suppression		Retro-reflective		Diffuse-reflective		Through-beam	
		Reflective	Reflective with IR light	Standard	With Polarization filter	Standard	Extremely Wide Angle	Receiver	Emitter
Cable	NPN	..B20NASA	..B20NAIS	..R60NASA	..P60NASA	..D10NASA	..D02NAWE	..T15NASA	..T15
	PNP	..B20PASA	..B20PAIS	..R60PASA	..P60PASA	..D10PASA	..D02PAWE	..T15PASA	
Plug	NPN	..B20NAM5SA	..B20NAM5IS	..R60NAM5SA	..P60NAM5SA	..D10NAM5SA	..D02NAM5WE	..T15NAM5SA	..T15M5
	PNP	..B20PAM5SA	..B20PAM5IS	..R60PAM5SA	..P60PAM5SA	..D10PAM5SA	..D02PAM5WE	..T15PAM5SA	
Rated operating distance (S <sub>n</sub> )		200 mm (7.9 inches)		6 m ER4 reflector 4 m ER4060 reflector		1 m	200 mm	15 m (49.2 feet)	
Hysteresis (H)		≤ 10%		5% to 20%				-	
Rated operational voltage		10 to 30 V DC (Ripple included)							
No load supply current (I <sub>0</sub> )		≤ 40 mA @ U <sub>B</sub> max. ≤ 20 mA @ U <sub>B</sub> min.		≤ 25 mA @ U <sub>B</sub> max.				≤ 20mA @ U <sub>B</sub> max.	
Output		Open collector, NPN or PNP by sensor type							-
Output function		N.O. (light switching) and N.C. (dark switching)							-
Output current		≤ 100 mA (max. load capacity 100 nF)							-
Minimum operational current (I <sub>m</sub> )		≤ 0,5 mA							-
Off-State current (I <sub>o</sub> )		≤ 100 µA							-
Voltage drop (U <sub>d</sub> )		≤ 2 VDC @ (I <sub>o</sub> ) max.							-
Sensor protection		Short circuit (A), reverse polarity (B) and transients (C)							B + C
Response time		≤ 1.0 ms		≤ 0.5 ms			≤ 1.0 ms		-
Power on delay (t <sub>v</sub> )		≤ 200 ms		≤ 30 ms			≤ 200 ms		≤ 30 ms
Led indications		Target detected (Yellow LED), Signal stability and Power ON (Green LED)							Power ON
Sensitivity control		Potentiometer, 210° electric, integrated in the receiver for through-beam type							
Degree of protection		IP68 @ 2 m and 20 h (IEC 60539; EN60947-1), IP69K (DIN40050-9)							
Ambient temperature		Operating: -25 to +60°C (-13 to +140°F) Storage: -40 to +70°C (-40 to +158°F)		Operating cable version: -25 to +60°C (-13 to +140°F) Operating plug version: -40 to +60°C (-40 to +140°F) Storage: -40 to +70°C (-40 to +158°F)					
Ambient humidity		Operating: 35 to 95 % RH, Storage: 35 to 95 % RH							
Ambient light		≤ 45 000 Lux	≤ 65 000 Lux			≤ 10 000 Lux		≤ 65 000 Lux	
CE marking		According to EN 60947-5-2							
Approvals		cULus (UL508, CSA C22.2), ECOLAB							
Installation category		III (IEC60664; EN60947-1)							
Pollution degree		3(EN60947-1)							
Vibration		10 to 150 Hz (1.0 mm/15 g; (EN 60068-2-6) in X,Y and Z direction							
Shock		30 g /11 ms. 6 positive and 6 negative in X,Y and Z direction							
Light source		617 nm	850 nm	625 nm	617 nm		-	850 nm	
Light type		Red modulated	Infrared modulated	Red modulated			-	Infrared modulated	
Material		Body: Stainless steel, AISI316L; Front glass: Polyphenylene sulfide (PPSU) or Polymethyl methacrylate (PMMA) organosiloxane-coated; Trimmer shaft: Polyetheretherketone (PEEK)							
Cable		PVC, black, 2 m, 4 x 0.14mm <sup>2</sup> , Ø=3.3 mm							
Connector		4-pin M8, male							
Dimensions		11 x 31.5 x 21 mm							
Weight incl. packaging		Cable version ≤ 100 g, Plug version ≤ 65 g							
Accessories (to be purchased separately)		Mounting bracket: APD30-MB1 or APD30-MB2 Connectors: CO..54NF... series							

# PD30 Series

## Miniature photoelectric sensors

### PD30 Advanced - features and functions



#### Yellow LED

Target detected

#### Green LED

Power supply and signal stability

#### Indicator cover

Polyethersulfone (PES)

#### Housing

Akrylonitril-butadien-styren (ABS)

#### Front glass

Polymethyl methacrylate (PMMA) SI-coated

#### Large lens

ensures long sensing range

#### 4-pin M8 plug connector

to meet most connection requirements

#### Built-in mounting holes

2 x M3 for fast mounting  
Spacing: 25.4 mm (1")

#### Teach-in button

- Distance setting
- Sensing overhead
- Normally open/  
Normally closed  
teach -in
- Setup while in operation

#### 4-wire PVC cable

Ø 3.3 mm to meet most connection requirements

### PD30 Advanced - benefits

#### Mute function (sensor blanking)

When more than one set of through-beam sensors are mounted close to each other, mutual interference might occur. Controlling the mute function - for instance from a PLC - can form a multiplex system where only one set of sensors is active at a time and

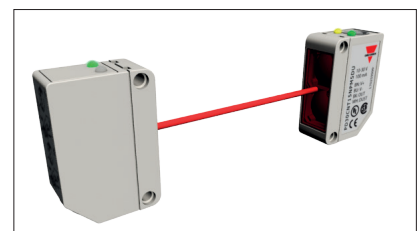
neighbouring interference is avoided. The mute function is also used to check the sensor for malfunctions or disconnections. If the emitter is turned on and off periodically, any malfunction will be detected as early as possible and costly breakdowns are prevented.



#### Half mute function (> 3 sec.)

When manually aligned sensors are used over a long distance, condensation or dust can cause false signals. Activating the half mute function (> 3 sec.) will set the

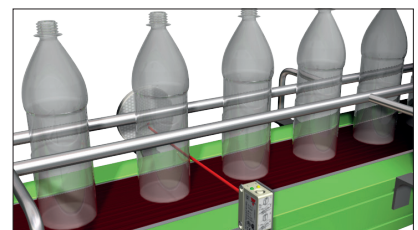
emitter at half power. Aligning the sensor at half power ensures enough energy to make the sensor function properly when switching back to full power.



#### Dust alarm output

To prevent downtime of machinery, sensors have to be kept clean when used in dirty or dusty environments. The sensor will send an alarm signal over the dust output if it receives a low-

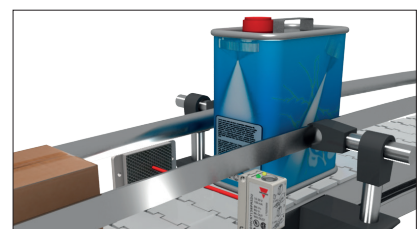
level signal for more than 20 ms. As a result, operators will know exactly when to clean the sensor, and sensors are cleaned only when necessary.



#### Remote teaching

Detection of diverse objects may require frequent modification of the sensor's settings such as distance and sensing overheads. A PLC connected to the remote teach input enables the

operator to change the sensor's settings while in operation. The teaching procedure is identical to the one used for manual teaching via the teach button.





## PD30 Advanced - specifications

PD30CN..			Diffuse-reflective		Retro-reflective			Through-beam		
			Background suppression	Energetic	Standard	With Polarization filter	For Transparent Objects	Receiver	Emitter	
Cable	NPN	Remote teach	..B15NPRT	..D10NPRT	..R06NPRT	..P06NPRT	..G02NPRT	..T15NPRT	-	
		Dust alarm	-	..D10NPDU	..R06NPDU	..P06NPDU	-	..T15NPDU	-	
		Mute function	-	-	..R06NPMU	..P06NPMU	..G02NPMU	-	..T15NPMU	
	PNP	Remote teach	..B15PPRT	..D10PPRT	..R06PPRT	..P06PPRT	..G02PPRT	..T15PPRT	-	
		Dust alarm	-	..D10PPDU	..R06PPDU	..P06PPDU	-	..T15PPDU	-	
		Mute function	-	-	..R06PPMU	..P06PPMU	..G02PPMU	-	..T15PPMU	
Plug	NPN	Remote teach	..B15NPM5RT	..D10NPM5RT	..R06NPM5RT	..P06NPM5RT	..G02NPM5RT	..T15NPM5RT	-	
		Dust alarm	-	..D10NPM5DU	..R06NPM5DU	..P06NPM5DU	-	..T15NPM5DU	-	
		Mute function	-	-	..R06NPM5MU	..P06NPM5MU	..G02NPM5MU	-	..T15NPM5MU	
	PNP	Remote teach	..B15PPM5RT	..D10PPM5RT	..R06PPM5RT	..P06PPM5RT	..G02PPM5RT	..T15PPM5RT	-	
		Dust alarm	-	..D10PPM5DU	..R06PPM5DU	..P06PPM5DU	-	..T15PPM5DU	-	
		Mute function	-	-	..R06PPM5MU	..P06PPM5MU	..G02PPM5MU	-	..T15PPM5MU	
Rated operating distance (S <sub>r</sub> )			150 mm 5.9 inches	1 m 3.3 feet	6 m 9.8 feet	6 m 9.8 feet	2 m 6.6 feet	15 m 49.2 feet		
Hysteresis (H)			≤ 10%						-	
Rated operational voltage			10 to 30 V DC, Ripple P-P ≤ 10%							
No load supply current (I <sub>0</sub> )			≤ 32 mA @ 24 V DC	≤ 30 mA @ 24 V DC				≤ 30mA	≤ 25mA	
Output			Open collector, NPN or PNP by sensor type						-	
Output function			N.O. (light switching) or N.C. (dark switching)						-	
Output current (I <sub>o</sub> )			≤ 100 mA (max. Load capacity 100 nF)						-	
Minimum operational current			≤ 0,5 mA						-	
Off-State current (I <sub>r</sub> )			≤ 100 µA						-	
Voltage drop (U <sub>d</sub> )			≤ 2.5 V DC @ 100 mA						-	
Sensor protection			Short circuit (A), reverse polarity (B) and transients (C)						B + C	
Response time			≤ 0,5 mS						-	
Power on delay (t <sub>r</sub> )			≤ 400 mS	≤ 300 mS						
Led indications			Target detected (Yellow LED), Signal stability and Power ON (Green LED)						Power ON	
Sensitivity control			Teach-In programming							
Degree of protection			IP67 (IEC 60529; 60947-1)							
Ambient temperature			-25 to +55°C (-13 to +131°F) no condensation, Storage -40 to +70°C (-40 to +158°F)							
Ambient humidity			Operating: 35 to 85 % RH, storage: 35 to 85 % RH							
Ambient light			≤ 10.000 Lux							
CE marking			According to EN 60947-5-2							
Approvals			cULus (UL508, CSA C22.2)							
Installation category			III (IEC60664/60664A; 60947-1)							
Pollution degree			3(IEC60664/60664A; 60947-1)							
Vibration			10 to 150 Hz (1.0 mm/15 g; IEC 60068-2-6) in X,Y and Z direction							
Shock			30 g /11 ms. 3 positive and 3 negative in X,Y and Z direction							
Emitting light source			Red LED	Infrared LED	Red LED			-	Infrared LED	
Material			Body, ABS light grey; Front glass, PMMA red; Trimmer shaft, POM dark grey							
Cable			PVC, black, 2 m, 4 x 0.14mm <sup>2</sup> , Ø=3.3 mm							
Connector			4-pin M8							
Dimensions			10.8 x 20 x 30 mm							
Weight incl. packaging			Cable version ≤ 40 g, Plug version ≤ 10 g							
Accessories			Mounting bracket: APD30-MB1							
Accessories, additional			'Mounting bracket: APD30-MB2 Connectors: CONM54NF-... Types'							

# PD30 Series

## Miniature photoelectric sensors

### PD30 *PointSpot* - features and functions



#### Yellow LED

Target detected

#### Green LED

Power supply and signal stability

#### Housing

Akrylonitril-butadien-styren (ABS)

#### Front glass

Polymethyl methacrylate (PMMA) SI-coated

#### Large lens

ensures long sensing range

#### 4-pin M8 plug connector

to meet most connection requirements

#### Built-in mounting holes

2 x M3 for fast mounting  
Spacing: 25.4 mm (1")

#### Indicator cover

Thermoplastic polyurethane (TPU)

#### Sensitivity shaft

Polyoxymethylen, acetal (POM)

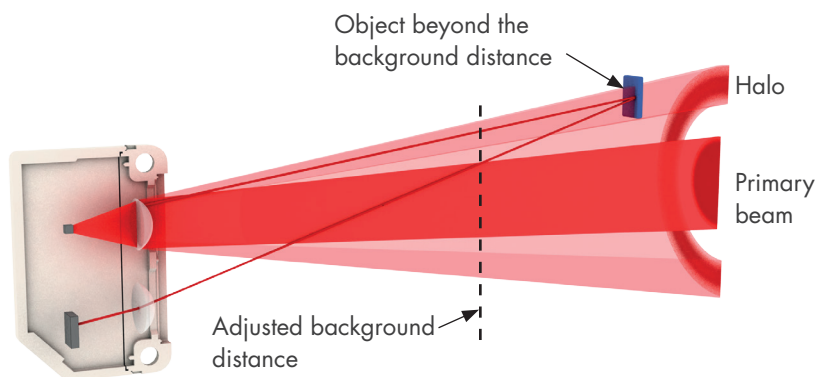
#### Potentiometer

- Manual setting
- Larger adjustability
- Easily set distance
- Back or top

#### 4-wire PVC cable

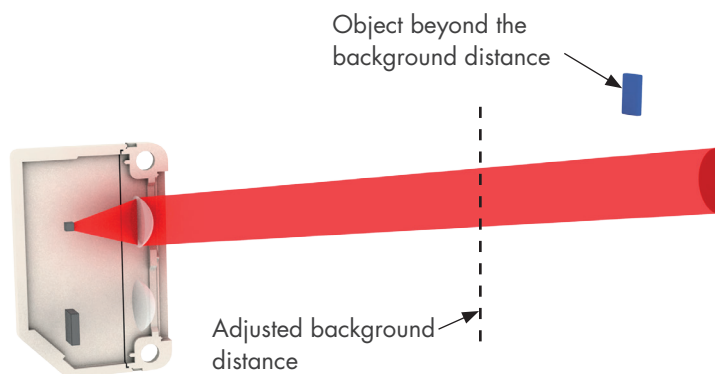
Ø 3.3 mm to meet most connection requirements

### PD30 *PointSpot* - principle



#### PD30 with standard emitter

An object with a high reflection placed within the light beam's halo but outside the primary light beam may cause an erroneous detection because the reflected light will hit the exact same spot on the receiver array.



#### PD30 with *PointSpot* emitter

As the *PointSpot* light has no halo, any object outside the primary beam will not be detected.

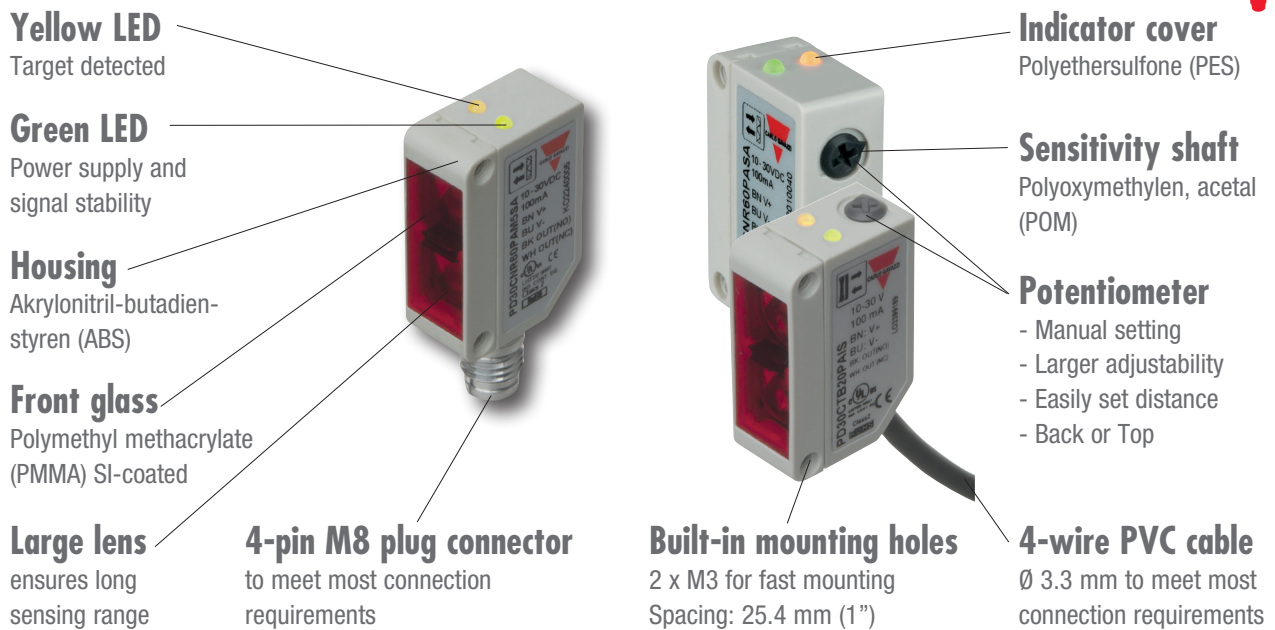
## PD30 PointSpot - specifications

PD30C...		Reflective	Retro-reflective
		Background suppression	With Polarization filter
Cable	NPN	..CNB25NAPS	..CNP50NAPS
	PNP	..CNB25PAPS	..CNP50PAPS
Plug	NPN	..CNB25NAM5PS	..CNP50NAM5PS
	PNP	..CNB25PAM5PS	..CNP50PAM5PS
Rated operating distance ( $S_n$ )		≤ 250 mm ≤ 9.8 inches	≤ 5 m (16.4 feet) with reflector ER4, ≤ 3 m (9.8 feet) with reflector ER4060
Emitter angle		±1.6° @ 100 mm	±1.0° @ 1/2 sensing distance
Hysteresis (H)		≤ 10%	3% ... 20%
Rated operational voltage		10 to 30 V DC (Ripple included)	
No load supply current ( $I_o$ )		≤ 50 mA @ $U_b$ min ≤ 20 mA @ $U_b$ max	≤ 25 mA @ $U_b$ max
Output		Open collector, NPN or PNP by sensor type	
Output function		N.O. and N.C.	
Output current ( $I_o$ )		<100 mA (Continuous), ≤ 100 mA @ 100 nF load (Short time)	
Minimum operational current		0.5 mA	
Off-State current ( $I_o$ )		100 μA	
Voltage drop ( $U_d$ )		≤ 2 VDC @ $I_o$ max.	
Sensor protection		Short circuit (A), reverse polarity (B) and transients (C)	
Response time		≤ 1.0 ms	≤ 0.5 ms
Power on delay ( $t_o$ )		≤ 200 ms	≤ 30 ms
Led indications		Target detected (Yellow LED), Signal stability and Power ON (Green LED)	
Sensitivity control		Single-turn potentiometer, 210° electrical adjustment, 240° mechanical adjustment	
Degree of protection		IP67 (IEC60539; EN60947-1)	
Ambient temperature		-25 to +60 °C (-13 to +140 °F) no condensation, storage -40 to +70 °C (-40 to +158 °F)	
Ambient humidity		Operating: 35 to 95 % RH, Storage: 35 to 95 % RH	
Ambient light		≤ 45 000 Lux	
CE marking		According to EN 60947-5-2	
Approvals		cULus (UL508, CSA C22.2)	
Installation category		III (EN60947-1)	
Pollution degree		3 (IEC60664; EN60947-1)	
Vibration		10 to 150 Hz (1.0 mm/15 g; EN60068-2-6) in X,Y and Z direction	
Shock		30 g/11 ms (6 positive and 6 negative; EN60068-2-27) in X,Y and Z direction	
Light source		621 nm, Red PointSpot	
Material		Body, ABS light grey; Front glass, PMMA red; Trimmer shaft, POM dark grey	
Cable		PVC, black, 2 m, 4 x 0.14mm <sup>2</sup> , Ø=3.3 mm	
Connector		4-pin M8	
Dimensions		10.8 x 20 x 30 mm	
Weight incl. packaging		Cable version ≤ 50 g, Plug version ≤ 20 g	

# PD30 Series

## Miniature photoelectric sensors

### PD30 Basic - features and functions



### PD30 Basic and Stainless Steel - new background suppression principle

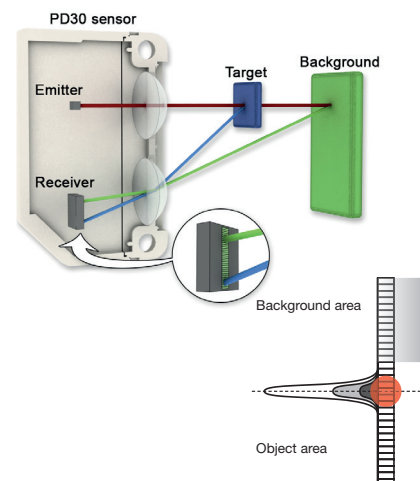
The new PD30 Stainless Steel and BASIC background suppression sensor (BGS) is based on a brand-new sensing principle. This principle increases the sensing distance considerably (200 mm) and it improves the detection accuracy of different colours, suppressing the background even more efficiently.

This revolutionary sensing technology uses an Active Pixel Sensor (APS) CMOS array of 64 x 1 sensors, where each pixel represents a specific position. It takes advantage of the fact that

the reflected light hits the APS array at exactly the same position.

This way, the object's mass centre can be found regardless of the energy of the received light. Using this technology, grey, black and white objects are detected at almost exactly the same distance.

Furthermore, unlike traditional CCD arrays, the CMOS array benefits from being immune to the blooming effect - not letting the light bleed onto other pixels and disturbing the detection.



## PD30 Basic - specifications

PD30C...			Diffuse-reflective				Retro-reflective		Through-beam		
			Background suppression		Energetic	Energetic Extreme Wide Angle	Standard	With Polarization filter	Receiver	Emitter	
Back Potentiometer	Cable	NPN	..NB20NASA	..NB20NAIS	..ND10NASA	-	..NR60NASA	..NP60NASA	..NT15NASA	..NT15	
		PNP	..NB20PASA	..NB20PAIS	..ND10PASA	-	..NR60PASA	..NP60PASA	..NT15PASA		
	Plug	NPN	..NB20NAM5SA	..NB20NAM5IS	..ND10NAM5SA	-	..NR60NAM5SA	..NP60NAM5SA	..NT15NAM5SA	..NT15M5	
		PNP	..NB20PAM5SA	..NB20PAM5IS	..ND10PAM5SA	-	..NR60PAM5SA	..NP60PAM5SA	..NT15PAM5SA		
Top Potentiometer	Cable	NPN	..TB20NASA	..TB20NAIS	..TD10NASA	..TD02NAWE	-	-	-	-	
		PNP	..TB20PASA	..TB20PAIS	..TD10PASA	..TD02PAWE	-	-	-	-	
Rated operating distance (S <sub>n</sub> )			200 mm 7.9 inches		1 m 3.3 feet	200 mm 7.9 inches	6 m 9.8 feet	6 m 9.8 feet	15 m 49.2 feet		
Emitter angle @ 1/2 distance			±2.5°	±1.5°	±2.0°	±15°	±2.0°		-	±2.0°	
Hysteresis (H)			≤ 10%				5% TO 20%		< 10%	-	
Rated operational voltage			10 to 30 V DC, Ripple P-P ≤ 10%								
No load supply current (I <sub>s</sub> )			≤ 30 mA @ U <sub>b</sub> min ≤ 20 mA @ U <sub>b</sub> max		≤ 25 mA					≤ 20mA	
Output			Open collector, NPN or PNP by sensor type							-	
Output function			N.O. (light switching) and N.C. (dark switching)							-	
Output current (I <sub>o</sub> )			≤ 100 mA (max. load capacity 100 nF)							-	
Minimum operational current			≤ 0,5 mA							-	
Off-State current (I <sub>o</sub> )			≤ 100 µA							-	
Voltage drop (U <sub>d</sub> )			≤ 2 V DC @ I <sub>o</sub> max							-	
Sensor protection			Short circuit (A), reverse polarity (B) and transients (C)							B + C	
Response time			≤ 1 mS		≤ 0.5 mS			≤ 1 mS		-	
Power on delay (t <sub>r</sub> )			≤ 200 mS								
Led indications			Target detected (Yellow LED), Signal stability and Power ON (Green LED)							Power ON	
Sensitivity control			Potentiometer, 210° electric, integrated in the receiver for through-beam type								
Degree of protection			IP67 (Iec 60529; 60947-1)								
Ambient temperature			-25 to +60 °C (-13 to +140 °F) no condensation, storage -40 to +70 °C (-40 to +158 °F)								
Ambient humidity			Operating: 35 to 85 % RH, storage: 35 to 85 % RH								
Ambient light			≤ 10.000 Lux								
CE marking			According to EN 60947-5-2								
Approvals			cULus (UL508, CSA C22.2)								
Installation category			III (IEC60664/60664A; 60947-1)								
Pollution degree			3(IEC60664/60664A; 60947-1)								
Vibration			10 to 150 Hz (1.0 mm/15 g; IEC 60068-2-6) in X,Y and Z direction								
Shock			30 g /11 ms, 3 positive and 3 negative in X,Y and Z direction								
Emitting light source			Red Led	Infrared LED	Red LED	Infrared LED	Infrared LED	Red LED	-	Infrared LED	
Material			Body, ABS light grey; Front glass, PMMA red; Trimmer shaft, POM dark grey								
Cable			Pcv, black, 2 m, 4 x 0.14mm <sup>2</sup> , Ø=3.3 mm								
Connector			4-pin M8								
Dimensions			10.8 x 20 x 30 mm								
Weight incl. packaging			Cable version ≤ 50 g, Plug version ≤ 20 g								

# PD30 Series

## Miniature photoelectric sensors

### Applications

#### Meat, fish and poultry

The food industry's high demands on hygiene and cleanliness require equipment that can withstand daily washdown at high temperatures, high-pressure cleaning and harsh detergents.

##### Our solution

The PD30 Stainless steel sensors work perfectly even in the harshest environments. The high-quality stainless steel housing guarantees maximum mechanical resistance, and prescribed cleaning schedules are smoothly met without costly machine downtime.



#### Dairy and juice production

Multi-coloured cartons used in the dairy and juice industries constitute a significant challenge to object detection in the manufacturing process. For example in the production lines of yoghurt cups, the presence of lids on the cups must be detected and it is essential that lids are not confused with yoghurt in the cups.

##### Our solution

Our PD30 background suppression sensor superiorly detects all colours on objects in the same distance from the sensor, and its durable design withstands daily cleaning processes including high-pressure water jets (IP69K) as well as aggressive cleaning agents.



#### Food handling and packaging

Typically, packaging lines and production lines in the food industry are not subject to the same stringent requirements. For convenience and simplicity, however, the trend is towards identical cleaning procedures throughout.

designed for wet as well as dry areas in the Food and Beverage industry. The stainless steel housing and high-end plastic materials guarantee maximum resistance against IP69K and Ecolab cleaning processes. As a consequence, cleaning routines and instructions are kept homogenous and clearly defined all over the plant.

##### Our solution

The PD30 Stainless steel sensors are



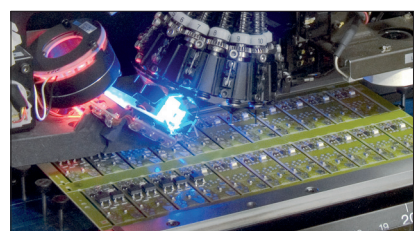
#### Printed circuit board manufacturing

In the PCB Industry considerable problems can arise when it comes to detecting black components on a PCB.

are detected when passing. Since background suppression is based on triangulation, component colours will not affect the detection. To protect operators on the assembly line from being blinded by an upwardly directed sensor, the infrared PD30 sensor is the obvious choice.

##### Our solution

The PD30 background suppression sensor is positioned below the PCBs which



## Applications

### Coffee vending machines

In vending machines sensors often confuse cups and backgrounds such as a person drawing a cup of coffee.

#### Our solution

The PD30 background suppression sensor enhances the overall ease of use of

the vending machine. Using the new BGS technology, it can detect cups in different colours equally well and, at the same time, ignore people and irrelevant background noise in front of the machine.



### End of material detection

End of spool detection of material supplied in narrow cassettes can be done using distance measurement. The sides of the cassette, however, can pose a problem because they are so tight that they might influence the detection.

#### Our solution

The PD30 sensor with *PointSpot* beam and background suppression ensures an absolutely precise detection which is not influenced by colour or reflections from the sides of the cassette.



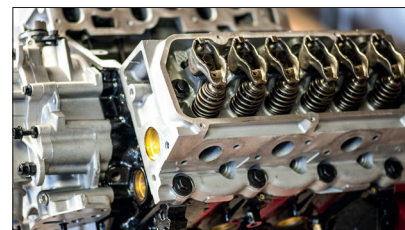
### Inspection control

An engine block must be examined to make sure that all the holes are present.

#### Our solution

Our PD30 background suppression sensor with its red visible *PointSpot* light can detect even tiny holes because of

the small beam diameter. Furthermore, since the *PointSpot* emitter produces no halo light, the surrounding parts of the hole are not unintentionally exposed to detection. Adjustment is easy due to the visible *PointSpot* beam.



## OUR SALES NETWORK IN EUROPE

### AUSTRIA

Carlo Gavazzi GmbH  
Ketzergasse 374,  
A-1230 Wien  
Tel: +43 1 888 4112  
Fax: +43 1 889 10 53  
office@carlogavazzi.at

### FRANCE

Carlo Gavazzi Sarl  
Zac de Paris Nord II, 69, rue de la Belle Etoile,  
F-95956 Roissy CDG Cedex  
Tel: +33 1 49 38 98 60  
Fax: +33 1 48 63 27 43  
french.team@carlogavazzi.fr

### ITALY

Carlo Gavazzi SpA  
Via Milano 13,  
I-20020 Lainate  
Tel: +39 02 931 761  
Fax: +39 02 931 763 01  
info@gavazziacbu.it

### SPAIN

Carlo Gavazzi SA  
Avda. Iparraguirre, 80-82,  
E-48940 Leioa (Bizkaia)  
Tel: +34 94 480 4037  
Fax: +34 94 431 6081  
gavazzi@gavazzi.es

### BELGIUM

Carlo Gavazzi NV/SA  
Mechelsesteenweg 311,  
B-1800 Vilvoorde  
Tel: +32 2 257 4120  
Fax: +32 2 257 41 25  
sales@carlogavazzi.be

### GERMANY

Carlo Gavazzi GmbH  
Pfnorstr. 10-14  
D-64293 Darmstadt  
Tel: +49 6151 81000  
Fax: +49 6151 81 00 40  
info@gavazzi.de

### NETHERLANDS

Carlo Gavazzi BV  
Wijkermeerweg 23,  
NL-1948 NT Beverwijk  
Tel: +31 251 22 9345  
Fax: +31 251 22 60 55  
info@carlogavazzi.nl

### SWEDEN

Carlo Gavazzi AB  
V:a Kyrkogatan 1,  
S-652 24 Karlstad  
Tel: +46 54 85 1125  
Fax: +46 54 85 11 77  
info@carlogavazzi.se

### DENMARK

Carlo Gavazzi Handel A/S  
Over Hadstenevej 40,  
DK-8370 Hadsten  
Tel: +45 89 60 6100  
Fax: +45 86 98 15 30  
handel@gavazzi.dk

### GREAT BRITAIN

Carlo Gavazzi UK Ltd  
4.4 Frimley Business Park,  
Frimley, Camberley, Surrey GU16 7SG  
Tel: +44 1 276 854 110  
Fax: +44 1 276 682 140  
sales@carlogavazzi.co.uk

### NORWAY

Carlo Gavazzi AS  
Melkeveien 13,  
N-3919 Porsgrunn  
Tel: +47 35 93 0800  
Fax: +47 35 93 08 01  
post@gavazzi.no

### SWITZERLAND

Carlo Gavazzi AG  
Verkauf Schweiz/Vente Suisse  
Sumpfstrasse 3,  
CH-6312 Steinhausen  
Tel: +41 41 747 4535  
Fax: +41 41 740 45 40  
info@carlogavazzi.ch

### FINLAND

Carlo Gavazzi OY AB  
Ahventie 4 B,  
FI-02170 Espoo  
Tel: +358 9 756 2000  
myynti@gavazzi.fi

### PORTUGAL

Carlo Gavazzi Lda  
Rua dos Jerónimos 38-B,  
P-1400-212 Lisboa  
Tel: +351 21 361 7060  
Fax: +351 21 362 13 73  
carlogavazzi@carlogavazzi.pt

## OUR SALES NETWORK IN THE AMERICAS

### USA

Carlo Gavazzi Inc.  
750 Hastings Lane,  
Buffalo Grove, IL 60089, USA  
Tel: +1 847 465 6100  
Fax: +1 847 465 7373  
sales@carlogavazzi.com

### CANADA

Carlo Gavazzi Inc.  
2660 Meadowvale Boulevard,  
Mississauga, ON L5N 6M6, Canada  
Tel: +1 905 542 0979  
Fax: +1 905 542 22 48  
gavazzi@carlogavazzi.com

### MEXICO

Carlo Gavazzi Mexico S.A. de C.V.  
Calle La Montaña no. 28, Fracc. Los Pastores  
Naucalpan de Juárez, EDOMEX CP 53340  
Tel & Fax: +52.55.5373.7042  
mexicosales@carlogavazzi.com

### BRAZIL

Carlo Gavazzi Automação Ltda. Av.  
Francisco Matarazzo, 1752  
Conj 2108 - Barra Funda - São Paulo/SP  
Tel: +55 11 3052 0832  
Fax: +55 11 3057 1753  
info@carlogavazzi.com.br

## OUR SALES NETWORK IN ASIA AND PACIFIC

### SINGAPORE

Carlo Gavazzi Automation Singapore Pte. Ltd.  
61 Tai Seng Avenue #05-06  
Print Media Hub @ Paya Lebar iPark  
Singapore 534167  
Tel: +65 67 466 990  
Fax: +65 67 461 980  
info@carlogavazzi.com.sg

### MALAYSIA

Carlo Gavazzi Automation (M) SDN. BHD.  
D12-06-G, Block D12,  
Pusat Perdagangan Dana 1,  
Jalan PJU 1A/46, 47301 Petaling Jaya,  
Selangor, Malaysia.  
Tel: +60 3 7842 7299  
Fax: +60 3 7842 7399  
sales@gavazzi-asia.com

### CHINA

Carlo Gavazzi Automation  
(China) Co. Ltd.  
Unit 2308, 23/F.,  
News Building, Block 1, 1002  
Middle Shennan Zhong Road,  
Shenzhen, China  
Tel: +86 755 83699500  
Fax: +86 755 83699300  
sales@carlogavazzi.cn

### HONG KONG

Carlo Gavazzi Automation  
Hong Kong Ltd.  
Unit 3 12/F Crown Industrial Bldg.,  
106 How Ming St., Kwun Tong,  
Kowloon, Hong Kong  
Tel: +852 23041228  
Fax: +852 23443689

## OUR COMPETENCE CENTRES AND PRODUCTION SITES

### DENMARK

Carlo Gavazzi Industri A/S  
Hadsten

### MALTA

Carlo Gavazzi Ltd  
Zejtun

### ITALY

Carlo Gavazzi Controls SpA  
Belluno

### LITHUANIA

Uab Carlo Gavazzi Industri Kaunas  
Kaunas

### CHINA

Carlo Gavazzi Automation (Kunshan) Co., Ltd.  
Kunshan

## HEADQUARTERS

Carlo Gavazzi Automation SpA  
Via Milano, 13  
I-20020 - Lainate (MI) - ITALY  
Tel: +39 02 931 761  
info@gavazziautomation.com



**CARLO GAVAZZI**  
Automation Components

*Energy to Components!*

[www.gavazziautomation.com](http://www.gavazziautomation.com)

