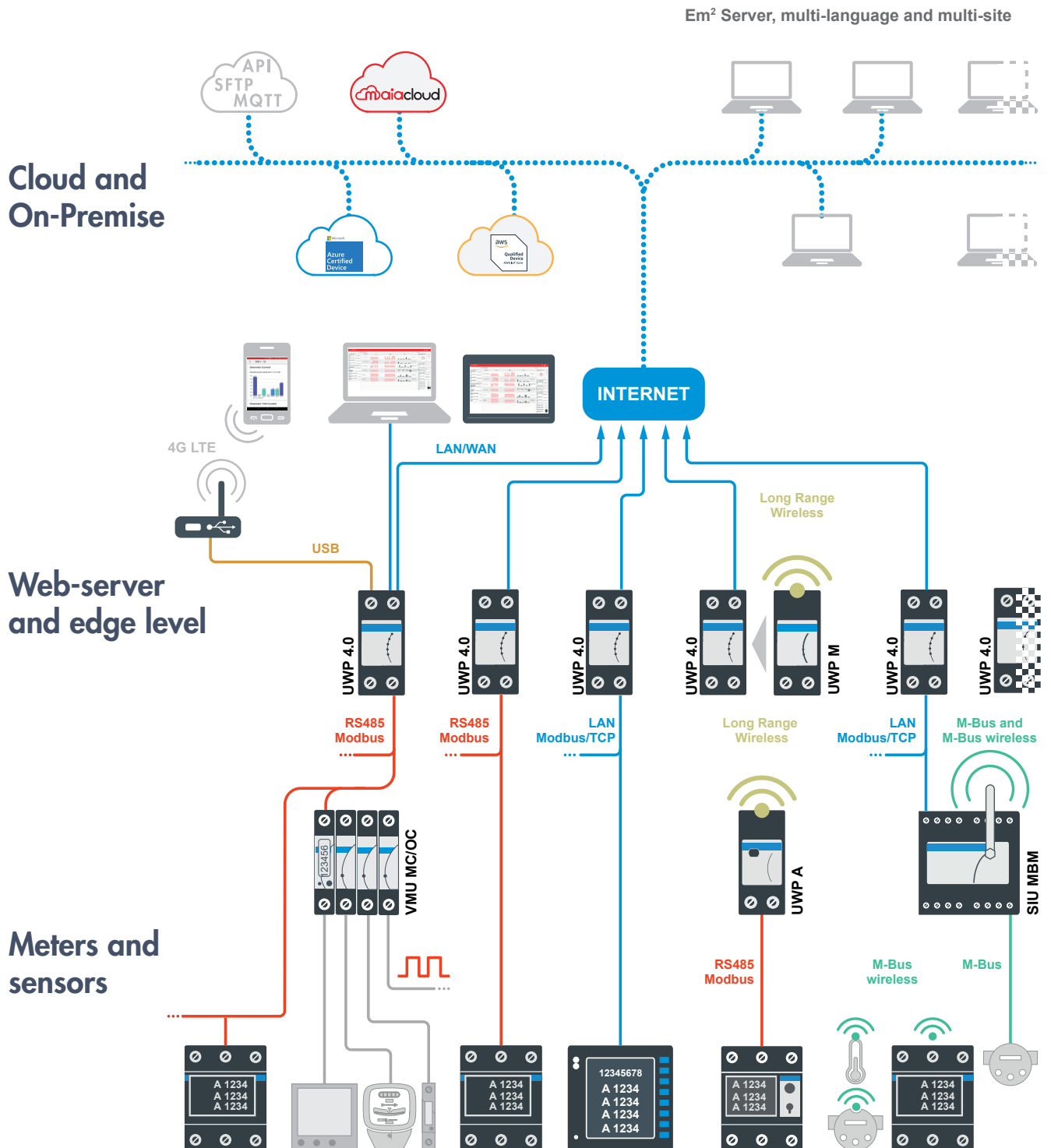


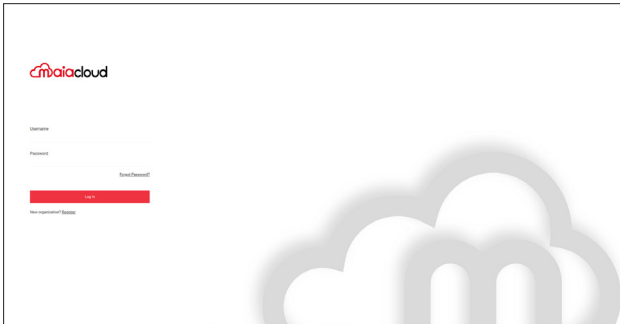
## Overview

# Energy management

# Overview Diagram

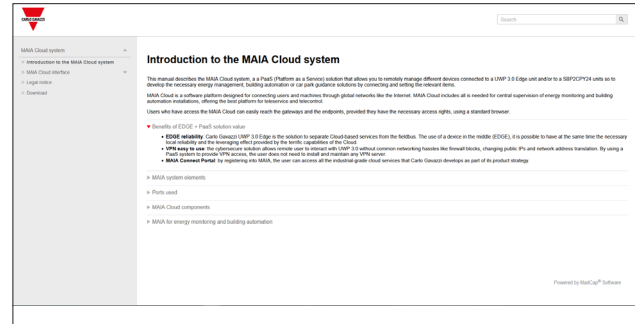


# Maia Cloud: secure remote control



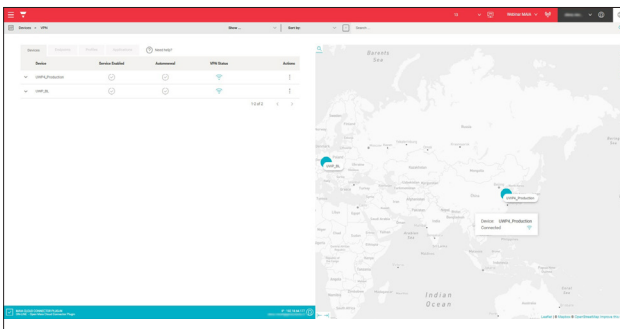
## Secure access

- Secure connection and authentication via HTTPS
- User profiling for granular control on assets management
- High availability and reliability of the MAIA Cloud portal



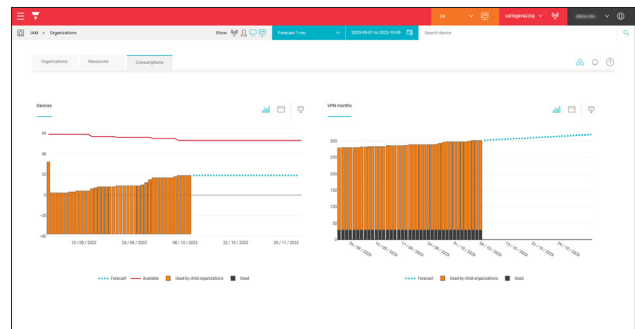
## Ease of use

- Comprehensive documentation available as Web-manual
- Optimized user experience



## Granular access

- Map view for locating devices
- Granular control on allowed application for specific device
- Organizations as containers of users and devices



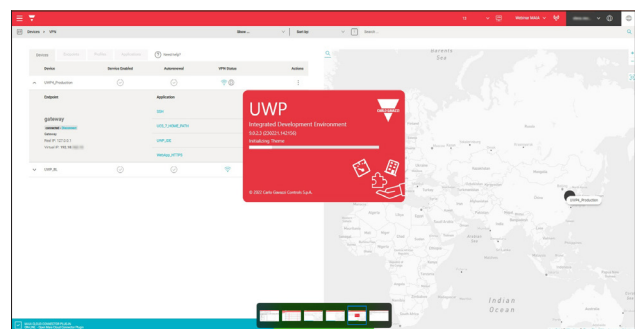
## Control and used resources

- Granular control on assets and licenses
- Charts and forecasts for managing and assign resources



## Web-Apps access

- Access to web apps of connected devices via standard browsers for PCs and Tablets
- Access to UWP 3.0 and UWP 4.0 Web-Apps
- Access to Web-Apps of endpoints in the same LAN as the gateway



## PC APP access

- Access to gateways and endpoints of allowed PC Apps
- Click'n go access to UWP 3.0 Tool and UWP 4.0 IDE
- Click'n go access to endpoints in the same LAN as the gateway to allowed PC APPS

# Overview

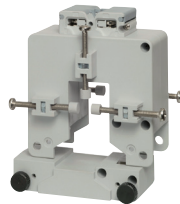
## Energy management

CT for cable or bus-bar	CT for cable or bus-bar	CT for cable or bus-bar	CT for cable	CT for cable
-------------------------	-------------------------	-------------------------	--------------	--------------



**CTD 1X/2X/3X/4X**

- For cable or bus-bar
- Cable: Ø23 mm to Ø51 mm
- Bar: 20x5 mm to 64x20 mm or 51x43 mm
- Sealable terminal covers
- Primaries from 50 A to 1600 A
- Secondary: 5 A (standard) 1 A (available upon request)
- EN61869-2
- CE, cURus



**CTD 5S/6S**

- Split-core for cable or bus-bar
- Cable: Ø26 mm to Ø50 mm
- Bar: 26x32 mm, 50x52 mm
- Sealable terminal covers
- Primaries from 100 A to 1000 A
- Secondary: 5 A (standard) 1 A (available upon request)
- EN61869-2
- CE, cURus



**CTD 8/9/10/11 S, V, H, Q**

- Solid or split-core for cable or bus-bar
- Bar: 31x81 mm (vertical), 81x31 mm (horizontal) to 38x127 mm
- Sealable terminal covers
- Primaries 150 A to 3200 A
- Secondary: 5 A (standard) 1 A (available upon request)
- EN61869-2
- CE, cURus



**CTV 1X/2X/3X/4X/6X/8X**

- Split-core current sensor for cable
- Cable: Ø9.5 mm to 35.5 mm
- Bar: 50x90 mm (CTV-8X)
- Primaries from 60 A to 800 A
- Secondary: 0.333 VAC
- CE, cURus



**CTA 5X/6X**

- Split-core current sensor for cable
- Cable: Ø24 mm to 36 mm
- Primaries from 100 A to 600 A
- Secondary: 5 AAC
- CE, cURus

3-phase power analyzers	3-phase power analyzers	3-phase power quality analyzers	3-phase branch circuit power analyzers
-------------------------	-------------------------	---------------------------------	--



**WM15**

- Dimensions: 96 x 96 mm
- Installation: panel mounting
- Power analyzers, metering from external inputs, THD measurement.
- Measurement of voltage, current, power, power factor and frequency.
- Bi-directional energy metering on 10-digit counters, class B EN50470-3, class 1 EN62053-21 or class 0.5S EN62053-22
- Voltage inputs: 230, 400, 480 or 600 VLL
- Current inputs: 5 A
- Auxiliary or self-power supply
- Pulse output and RS485 Modbus RTU or M-Bus
- Sealable terminal covers
- CE, MID (PF), cULus



**WM20**

- Dimensions: 96 x 96 mm
- Installation: panel mounting
- Accuracy 0.2% (voltage, current)
- Universal power supply
- Front protection degree IP65, NEMA4X, NEMA12
- Modular housing to build the instrument according to the real application needs
- Modbus and BACnet (both RS485 or Ethernet), and Profibus DPVO communication port available
- Configuration software (PC or Android app)
- cULus



**WM30 / WM40**

- Dimensions: 96 x 96 mm
- Installation: panel mounting
- Accuracy 0.2% (voltage, current)
- Universal power supply
- Front protection degree IP65, NEMA4X, NEMA12
- Modular housing to build the instrument according to the real application needs
- Modbus and BACnet (both RS485 or Ethernet), Profibus DPVO communication port available
- 16-alarm PLC logic and digital inputs for utility metering (WM40)
- Built-in datalogger for instantaneous variables, dmd profiles and events (WM40)
- Configuration software (PC or Android app)
- cULus, Solar California listed



**WM50 and TCD12**

- Dimensions: 96 x 96 mm
- Installation: panel mounting
- Up to 96 channels, 32 A, 65 A max (8x TCD12)
- Accuracy 0.2% (voltage, main current), 0.5% (branch currents)
- Modbus communication port available (RS485 or Ethernet)
- Up to 6 digital outputs (static or relay) and 6 digital inputs or temperature and analogue input
- 96 channel alarms, freely settable set point for load monitoring
- Built-in datalogger for variables/events
- Configuration software (PC or Android app)
- cULus

# Energy management

## 1-phase energy meters/analyzers



### EM110/EM111/EM112

- Dimensions: 1 DIN module
- Installation: DIN-rail
- Measurement of voltage, current, power, power factor and frequency (EM111, EM112)
- Bi-directional energy metering, 7 digits cl. B (EN50470) (EM111, EM112)
- Imported energy metering (EM110)
- Measuring inputs: 115/230 VAC, 32 A (EM110, EM111), 100 A (EM112), 5 A current transformer (EM111 AV5), 333 mV current sensor (EM111 MV5)
- Dual tariff management (EM111, EM112)
- Pulse output (EM110, EM111 and EM112) or RS485 Modbus or M-Bus port (EM111, EM112)
- CE, MID (PFA, PFB, SFA), cULus (115 V) (EM111)

## 3-phase energy analyzers



### EM330 / EM340

- Dimensions: 3 DIN modules
- Installation: DIN-rail
- Backlit touch LCD
- Measurement of voltage, current, power, power factor and frequency
- Bi-directional energy metering, 3x 8-digit, cl. B (EN50470)
- Measuring inputs: 400 to 480 VLL AC, 5 A current input via current transformer (EM330) 208 to 400 VLL AC, 65 A (EM340)
- Auxiliary power supply (EM330) Self powered (EM340)
- Dual tariff management
- Pulse output or RS485 Modbus or M-Bus port
- Sealable terminal covers
- CE, MID (PFA and PFB), cULus (EM330)

## 1-phase energy analyzers



### EM511

- Dimensions: 1 DIN module
- Installation: DIN-rail
- Backlit LCD with mechanical push buttons
- Measurement of voltage, current, power, power factor, frequency, THD (voltage and current) and run-hour meters
- Bi-directional energy analyzer, 9-digit, cl. B (EN50470-3), 0.001 kWh resolution
- Measuring inputs: 120 to 240 V L-N, 45 A
- Self-powered
- Dual tariff management
- RS485 Modbus RTU (data refresh every 100 ms), M-Bus port, and digital input/output (pulse or alarm)
- Sealable terminal covers
- CE, cULus, UKCA, MID (PFA, SFA and PFB Bi-directional)

## 3-phase energy analyzers



### EM530 / EM540

- Dimensions: 3 DIN modules
- Installation: DIN-rail
- Backlit LCD with mechanical push buttons
- Measurement of voltage, current, power, power factor, frequency and THD (voltage and current) and run-hour meters
- Bi-directional energy metering, 3x11-digit, cl. B (EN50470), 0.001 kWh resolution
- Measuring inputs: 208 to 415 VLL AC, 5 A current input via current transformer (EM530), 208 to 415 VLL AC, 65 A (EM540)
- Self-powered
- Dual tariff management
- Static output (pulse or alarm) or RS485 Modbus or M-Bus port (100 ms refresh time)
- Sealable terminal covers
- CE, MID (PFA, PFB and PFC), cULus

## 1 and 3-phase energy transducers



### ET112 / ET330 / ET340

- Dimensions: 2 DIN (ET112); 3 DIN (ET330, ET340) modules
- Installation: DIN-rail
- Measurement of voltage, current, power, power factor and frequency.
- Bi-directional energy metering, 2 tariffs, cl. 1 (EN62053-1)
- Measuring inputs: 115/230 VAC, 100 A (ET112); 208 to 400 VLL AC, 5 A current input via current transformer (ET330); 65 A (ET340);
- Self-powered
- RS485 Modbus port (screw, 2x RJ45)
- Optical port
- Sealable terminal covers
- CE

## Communication interface OptoProg



### OptoProg

- Bluetooth and USB interface for meters and analysers with optical port
- Compatible with WM15, WM20, WM30, WM40, WM50 and ET100, ET300 families
- Compatible with UCS PC software and UCS Mobile Android APP
- Battery powered
- CE, FCC, IC, Bluetooth

## 3-phase power transducers



### CPT DIN

- Dimensions: 45 x 83.5 x 98.5 mm
- Installation: DIN-rail
- Programmable one-, two- and three-phase measurement transducer
- Measurement of voltage, current, power, power factor, frequency and energy
- Energy metering, 9 digits
- Measuring inputs 3 x 230(400) VAC, 5 A
- Power supply: 18-60 or 90-260 VDC/AC
- Outputs: 3 analogue 20 mA, or 3 10 VDC, 2 relays for alarms
- RS485 Modbus RTU
- CE, cURus, CSA

## 3-phase energy analyzers



### EM24

- Dimensions: 4 DIN modules
- Installation: DIN-rail
- Meter for energy from CT 5 A or for direct energy 65 A. External pulse counting
- Measurement of voltage, current, power, power factor and frequency. Metering from external sources and 4-tariff management
- Bi-directional energy metering on 2 8-digit counters, cl. B (EN50470-3)
- Voltage inputs: 3x230(400)VAC
- Current inputs: 5 A, 65 A
- 115-230 VAC or self-powered
- 3 inputs for external dimension counting (IS)
- Pulse or relay output; RS485 (Modbus RTU), Ethernet (Modbus TCP), M-Bus (wired and wireless)
- Sealable terminal covers
- CE, MID (PF), cULus (5 A and Ethernet ver.)



# Energy management

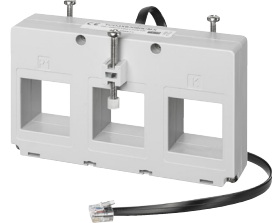
## Quick-fit 3-phase energy analyzers



### EM270 / EM271 / EM280

- Dimensions: 4 DIN modules or 72x72 mm
- Installation: DIN-rail or panel mounting
- Two 3-phase energy analyzers with sum function
- Current measurement by triple CT, solid core (EM270), split-core (EM271) with RJ plug, 6 transformers block (EM280)
- Quick installation through RJ connectors
- Automatic recognition of CT ratios
- Measurement of voltage, current, power, power factor and frequency
- Active energy: Equivalent to Class 1 (EN62053-21)
- Inputs: 3x230(440)VAC, current range according to the TCD accessories
- Outputs: 2 pulse (loads 1 and 2)
- RS485 Modbus RTU
- CE, cULus

## 3-phase CT for EM270 for cable or bus-bar



### TCD 1X/TCD 2X/TCD 3X

- Equivalent to class 0.5 (current) of IEC61869-2
- Dimensions (LxHxP):  
TCD-1X: 74.84x72x66.80 mm  
TCD-2X: 105x72x50 mm  
TCD-3X: 135x78x50 mm
- Bus-bar sizes:  
TCD-1X: 15.90x30.48 mm  
TCD-2X: 21.26x25.26 mm  
TCD-3X: 31.25x31.25 mm
- Centre-to-centre distance:  
TCD-1X: 25 mm  
TCD-2X: 35 mm  
TCD-3X: 45 mm
- Primary:  
TCD-1X: 160 A  
TCD-2X: 250 A  
TCD-3X: 630 A
- CE, UL (with EM270)

## Multiple miniature split-core current sensor for EM271



### TCD M

- Equivalent to class 1 (currents) of IEC61869-2
- Primary: 60 A (TCD0M), 100 A (TCD1M), 200 A (TCD2M), 400 A (TCD3M)
- Hole size: 9.6 mm (TCD0M), 15.5 mm (TCD1M), 15.5 mm (TCD2M), 20.5 mm (TCD3M)
- Cable length: 1.8 m (TCD0M), 1.5 m (TCD1M and TCD2M), 2.0 m (TCD3M)
- Auto-detection of the primary current rated value by the EM271 energy meter
- TCD M head for wall and DIN-rail mounting
- Umbilical connection (80 cm) from TCD M head to EM271 energy meter through RJ11
- CE, UL (with EM271)

## Multiple current transformer block for EM280



### TCD06 BX / TCD06 BS

- Equivalent to class 0.5 (BX) and class 1 (BS) (current) of IEC61869-2
- Solid core (BX) or split core (BS)
- Primary current: 32 A
- Hole size: 7 mm (BX) or 8.5 mm (BS)
- Hole centre distance: 17.5 mm
- RJ11 cable length: 80, 150 or 200 cm
- Auto-detection of the primary current rated value by the EM280 energy meter
- CE, UL (with EM280)

## 3-phase energy analyzers for 5A, CTV or ROG 4K



### EM210

- Dimensions: 4 DIN modules or 72x72 mm
- Installation: DIN-rail or panel mounting
- LCD with two installation options
- Measurement of voltage, current, power, power factor and frequency
- Bi-directional energy metering, 3 x 3-digit or 8-digit readout, d. B (EN50470)
- Voltage inputs: 3x230 (400) VAC; Current inputs: 5 A CT (AV version) or 0.333 V from CTV-xx sensors (MV version) or ROG4K coils (MV version)
- Self-power supply
- Pulse output 1, RS485 Modbus RTU, high speed (up to 115 kbps)
- Sealable terminal covers
- CE, cULus, MID (AV and PF version)

## Rogowski coil



### ROG 4X / ROG 4U

- Flexible current sensor (Rogowski coil) for EM210 (MV version)
- Primary current from 20 to 4000 A (ROG4X), from 20 to 2000 A (ROG4U)
- Secondary output 100 mV/kA @ 50 Hz, 120 mV/kA @ 60 Hz
- Extended accuracy range  $\pm 1\%$
- External coil diameter:  
90 mm to 290 mm (ROG4X)  
from 105 mm or 135 mm (ROG4U)
- Coil thickness: 8.5 mm
- Direct connection to EM210 MV energy analyzer
- No power supply or external integrator required
- Coloured label on the cable for error-free connection check
- CE and cURus (ROG4X), cULus (UL2808) (ROG4U)

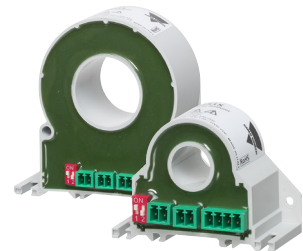
## Energy transducer for DC systems



### DCT1

- Dimensions: 92 x 115 x 58 mm
- Installation: DIN rail and back panel by screw terminals
- Cable loss compensation
- Measurement of voltage, current, power
- Bi-directional energy metering
- Voltage input: from 150 to 1000 VDC; Current input: 300 A max (AV30 version), 600 A max (AV60 version)
- Auxiliary power supply 12 to 24 VDC
- Modbus RTU or SML (200 ms data refresh time). Signed data transmission
- Class 1 accuracy (IEC 62053-41), 0.0001 kWh energy resolution
- CE, cURus

## Contactless power analyzers



### CPA050 / CPA300

- Dimensions: 63x46x25 mm (CPA050), 99x89x30 mm (CPA300)
- Installation: DIN-rail and panel mounting
- 1-phase AC (from 1 to 400 Hz) or DC
- Power supply from 9 to 30 VDC
- Contactless Hall effect sensing for current:  $\varnothing$  15 mm hole (CPA050)  $\varnothing$  33 mm hole (CPA300)
- True RMS AC and DC monitoring
- Voltage range: 800 VAC, 1000 VDC
- Current range: 50A AC/DC (CPA050), 300 A AC, 400 A DC (CPA300)

# Energy management

## IIoT Edge devices



### UWP 4.0 / UWP 4.0 SE

- Datalogger/Controller with
- Web-Server, for energy efficiency management applications
- Local gateway functions (BACNet and Modbus)
- Remote gateway functions (FTP, SFTP, FTPS, Rest-API)
- Microsoft Azure & Amazon AWS Certified for IoT
- Huge ecosystem of compatible meters, sensors, actuators
- Flexible control functions
- MAIA Cloud VPN for secure remote access
- Security Capabilities Verified by UL to level SILVER (SE)

## Cloud solution



### MAIA CLOUD

- Cloud solution for remote management of IoT devices
- Compatible with UWP4.0, UWP4.0 SE and XAP
- Secure VPN Management
- User authentication and organization management
- Remote connection to gateways, connected endpoints and connected meters

## Long range endpoint adapter



### UWP A

- Dimensions: 2-DIN modules
- Endpoint adapter that provides LoRa® or LoRaWAN® communication to an RS485 Carlo Gavazzi meter
- EU868 and US915 ISM Bands
- Power supply 24 VDC, 115-240 VAC
- CE, LoRaWAN Certified™
- Plug and play commissioning via UCS Software
- Up to 50 UWP A each UWP M
- Up to 10 km wireless communication distance in open air
- High performance antenna included

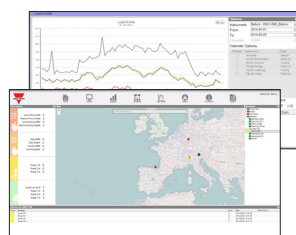
## Long range wireless gateway



### UWP M

- Dimensions: 2-DIN modules
- LoRa master concentrator that gathers data from multiple UWPA adapters.
- Comprehensive solution for integrating Carlo Gavazzi private LoRa network
- EU868 and US915 ISM Bands
- Power supply 24 VDC, 115-240 VAC
- Works in combination with the UWP
- Set-up via UWP Software Tool
- Up to 10 km wireless communication distance in open air
- High performance antenna included

## Multi-site monitoring



### Em<sup>2</sup> Server

- Software for energy data management
- Multi-site monitoring management
- Flexible and scalable architecture
- VMware® technology compatibility
- Load profile management
- Data analysis and benchmark
- Data and event logging
- Customizable graphical synoptic
- Configurable reports in PDF or Excel formats
- Tariffs and contract management
- Alarms management
- Database replication from up to 100 VMU-C EM or UWP

## M-Bus and wireless M-Bus concentrators



### SIU MBM-01 / SIU MBM-02

- Dimensions 95 x 71 x 60 mm DIN-rail housing
- SIU MBM-01: M-Bus input
- SIU MBM-02: M-Bus and wireless M-Bus input
- MODBUS TCP/IP output
- Power supply from 15 to 21 VAC, from 18 to 35 VDC
- Ethernet port
- MBUS and Wireless M-Bus scan feature
- SIU MBM-01: up to 20 M-Bus connectable devices
- SIU MBM-02: up to 20 M-Bus connectable devices and 32 wireless M-Bus devices
- SIU-MBM-01-160: up to 160 M-Bus connectable devices
- Set-up by UCS software

## Quick-fit 3-phase energy transducer



### ET272 + VMU C EM

- Dimensions: 4 DIN modules
- Installation: DIN-rail mounting
- Two 3-phase energy transducers in one
- Current measurement by split-core with RJ plug
- Quick installation through RJ connectors
- Automatic recognition of CT ratios
- Measurement of voltage, current, power, power factor and frequency
- Energy metering, cl. 1
- Inputs: 3 x 230 (440) VAC, current range according to the TCD accessories
- Outputs: 2 pulse (loads 1 and 2)
- RS485 Modbus RTU
- Self addressing function by means of VMU C EM
- CE, cULus

## Pulse counter concentrator + extension



### VMU MC / VMU OC

- Dimensions 1 DIN modules
- VMU MC: 2 SO input (pulse counting or ON/OFF monitoring)
- VMU OC: 3 SO input (pulse counting or ON/OFF monitoring)
- VMU MC: MODBUS output
- VMU OC: local bus connection to VMU-MC
- VMU MC: 24 VDC power supply
- VMU OC: local bus power supply
- VMU MC: LCD display
- VMU MC: modular solution (from 2 to 11 SO inputs)
- VMU OC: extension module for VMU-MC
- Configuration by UCS Software
- Compatible with Utility meters with SO output

## OUR SALES NETWORK IN EUROPE

### AUSTRIA

Carlo Gavazzi GmbH  
Ketzergasse 374,  
A-1230 Wien  
Tel. +43 1 888 4112  
Fax +43 1 889 1053  
office@carlogavazzi.at

### FINLAND

Carlo Gavazzi OY AB  
Ahventie, 4 B  
FI-02170 Espoo  
Tel. +358 9 756 2000  
myynti@gavazzi.fi

### GREAT BRITAIN

Carlo Gavazzi UK Ltd  
4.4 Frimley Business Park,  
Frimley, Camberley,  
Surrey GU16 7SG  
Tel. +44 1 276 854110  
Fax +44 1 276 682140  
sales@carlogavazzi.co.uk

### NORWAY

Carlo Gavazzi AS  
Melkeveien 13,  
N-3919 Porsgrunn  
Tel. +47 35 93 08 00  
Fax +47 35 93 08 01  
post@gavazzi.no

### SWEDEN

Carlo Gavazzi AB  
V:a Kyrkogatan 1,  
S-652 24 Karlstad  
Tel. +46 54 85 11 25  
Fax +46 54 85 11 77  
info@carlogavazzi.se

### BELGIUM

Carlo Gavazzi NV/SA  
Mechelsesteenweg 311,  
B-1800 Vilvoorde  
Tel. +32 2 257 41 20  
sales@carlogavazzi.be

### FRANCE

Carlo Gavazzi Sarl  
Zac de Paris Nord II, 69,  
rue de la Belle Etoile,  
F-95956 Roissy CDG Cedex  
Tel. +33 1 49 38 98 60  
Fax +33 1 48 63 27 43  
french.team@carlogavazzi.fr

### ITALY

Carlo Gavazzi SpA  
Via Milano 13,  
I-20045 Lainate (MI)  
Tel. +39 02 931 76 1  
info@gavazziacbu.it

### PORTUGAL

Carlo Gavazzi Lda  
Rua dos Jerónimos 38-B,  
P-1400-212 Lisboa  
Tel. +351 21 361 70 60  
Fax +351 21 362 13 73  
carlogavazzi@carlogavazzi.pt

### SWITZERLAND

Carlo Gavazzi AG  
Verkauf Schweiz/Vente Suisse  
Sumpfstrasse 3,  
CH-6312 Steinhausen  
Tel. +41 41 747 45 35  
Fax +41 41 740 45 40  
info@carlogavazzi.ch

### DENMARK

Carlo Gavazzi Handel A/S  
Over Hadstenvej 40,  
DK-8370 Hadsten  
Tel. +45 89 60 61 00  
Fax +45 86 98 15 30  
handel@gavazzi.dk

### GERMANY

Carlo Gavazzi GmbH  
Pfnorstr. 10-14  
D-64293 Darmstadt  
Tel. +49 6151 81 00 0  
Fax +49 6151 81 00 40  
info@gavazzi.de

### NETHERLANDS

Carlo Gavazzi BV  
Wijkmeerweg 23,  
NL-1948 NT Beverwijk  
Tel. +31 251 22 93 45  
info@carlogavazzi.nl

### SPAIN

Carlo Gavazzi SA  
Avda. Iparraguirre, 80-82,  
E-48940 Leioa (Bizkaia)  
Tel. +34 94 480 40 37  
Fax +34 94 431 60 81  
gavazzi@gavazzi.es

## OUR SALES NETWORK IN THE AMERICAS

### USA

Carlo Gavazzi Inc.  
750 Hastings Lane,  
Buffalo Grove, IL 60089-6904,  
USA  
Tel. +1 847 465 61 00  
sales@carlogavazzi.com

### CANADA

Carlo Gavazzi Inc.  
2660 Meadowvale Boulevard,  
Mississauga, ON L5N 6M6,  
Canada  
Tel. +1 905 542 0979  
Fax +1 905 542 2248  
gavazzi@carlogavazzi.com

### MEXICO

Carlo Gavazzi Mexico S.A. de C.V.  
Circuito Puericultores 22,  
Ciudad Satelite  
Naucalpan de Juárez,  
Edo Mex. CP 53100 - Mexico  
Tel. +52 55 5373 7042  
Fax +52 55 5373 7042  
mexicosales@carlogavazzi.com

### BRAZIL

Carlo Gavazzi Automação Ltda.  
Av. Francisco Matarazzo,  
1752 Conjunto 2108  
CEP 05001-200 -  
São Paulo - SP - Brazil  
Tel. +55 11 3052 0832  
Fax +55 11 3057 1753  
info@carlogavazzi.com.br

## OUR SALES NETWORK IN ASIA AND PACIFIC

### SINGAPORE

Carlo Gavazzi Automation  
Singapore Pte. Ltd.  
61 Tai Seng Avenue #05-06  
Print Media Hub  
@ Paya Lebar iPark  
Singapore 534167  
Tel. +65 67 466 990  
Fax +65 67 461 980  
info@carlogavazzi.com.sg

### TAIWAN

Branch of Carlo Gavazzi Automation  
Singapore Pte. Ltd.  
12F-3, No. 530, Yingcai Rd.,  
West Dist., Taichung City  
403518,  
Taiwan, China  
Tel. +886 4 2258 4001  
Fax +886 4 2258 4002

### MALAYSIA

Carlo Gavazzi Automation (M)  
SDN. BHD.  
D12-06-G, Block D12,  
Pusat Perdagangan Dana 1,  
Jalan PUJ 1A/46,  
47301 - Petaling Jaya,  
Selangor, Malaysia  
Tel. +60 3 7842 7299  
Fax +60 3 7842 7399  
info@gavazzi-asia.com

### CHINA

Carlo Gavazzi Automation  
(China) Co. Ltd.  
Unit 2308, 23/F.,  
News Building, Block 1,1002  
Middle Shennan Zhong Road,  
Futian District,  
Shenzhen, China  
Tel. +86 755 8369 9500  
Fax +86 755 8369 9300  
sales@carlogavazzi.cn

### HONG KONG

Carlo Gavazzi Automation  
Hong Kong Ltd.  
Unit No. 16 on 25<sup>th</sup> Floor,  
One Midtown,  
No. 11 Hoi Shing Road, Tsuen Wan,  
New Territories, Hong Kong  
Tel. +852 26261332  
Fax +852 26261316

## OUR COMPETENCE CENTRES AND PRODUCTION SITES

### DENMARK

Carlo Gavazzi Industri A/S  
Hadsten

### MALTA

Carlo Gavazzi Ltd  
Zejtun

### ITALY

Carlo Gavazzi Controls SpA  
Belluno

### LITHUANIA

Uab Carlo Gavazzi Industri Kaunas  
Kaunas

### CHINA

Carlo Gavazzi Automation  
(Kunshan) Co., Ltd.  
Kunshan

## HEADQUARTERS

### CARLO GAVAZZI AUTOMATION SPA

Via Milano, 13  
I-20045 - Lainate (MI) - ITALY  
Tel. +39 02 931 761  
info@gavazziautomation.com

*Energy to Components!*

www.gavazziautomation.com